

## Weekly Rainfall and Temperature Outlook and Monitoring

### Highlights

#### Outlook for 14<sup>th</sup> to 21 January 2025

- Dry conditions are expected over most parts of the country from the 14<sup>th</sup> to the 21<sup>st</sup> of January 2025
- Forecast Mean Temperatures of less than 28<sup>o</sup>C cover most South Sudan except Eastern Equatoria, Bibor, Like State, Jonglei, and Southeast Upper Nile State.

#### Expectations for next week 14<sup>th</sup> to 21<sup>st</sup> January 2025

- **high heat stress conditions** are expected to persist next week, especially in eastern, and northeastern regions, requiring proactive measures to mitigate health and environmental impacts. 14, 15, 16, 17, 18 and 19 January 2025)
- The lack of rainfall may exacerbate challenges for pastoralists and farmers, particularly in areas dependent on rainfall for water and fodder.

**Thus, it is recommended that the general population adopt the following safety measures:**

- Public awareness campaigns should focus on staying hydrated, limiting outdoor activities during peak heat hours, and wearing light, breathable clothing.
- Encourage efficient water use and pre-position resources in areas forecasted for hotter and drier conditions
- It's good to stay updated on meteorological services advisories, especially in regions expecting hotter and drier conditions
- Monitor weekly forecast updates from meteorological services

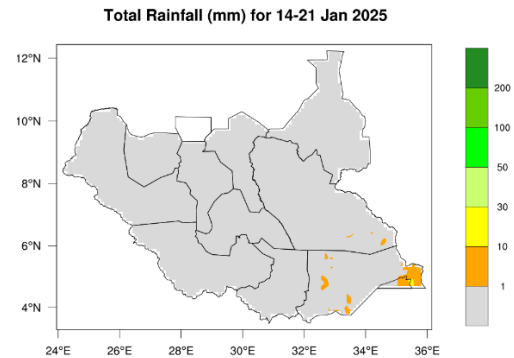
#### Notes

The South Sudan Meteorological Department's Weekly Rainfall and Temperature Outlook and Monitoring offers concise and timely weather predictions essential for immediate planning and operational decisions across vital sectors such as agriculture, transportation, and emergency services. This forecast provides a detailed outlook on temperature variations, rainfall probabilities, and any impending severe weather conditions, enabling stakeholders to mitigate risks, plan agricultural activities more effectively, and ensure the safety of transportation routes. The weekly forecast is critical in improving community readiness and economic stability by accelerating short-term decision-making processes.

## Weekly Rainfall and Temperature Outlook and Monitoring

### Rainfall Forecast for 14<sup>th</sup> to 21<sup>st</sup> January 2025

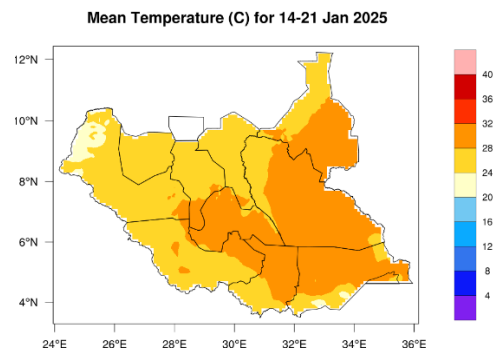
**Light Rainfall (less than 30 mm):** Most South Sudan will experience dry conditions during this period (14 to 21 January 2025), with minimal or no rainfall expected across the country except light rainfall over Eastern Equatoria and the South of Bibor Administration Area. This is typical of the dry season in South Sudan, which is characterized by low rainfall and high temperatures.



**Figure 1a:** Outlook for 14 to 21 Jan. 2025 Total Rainfall

### Mean Temperature Outlook for 14 to 21 January 2025

From next week, January 14<sup>th</sup>, to January 21<sup>st</sup>, 2025, the average Temperature is expected to range between 20 C and 28 C in many parts of South Sudan. More than 28C over Northeastern Western Equatorial, Eastern Equatoria State, Bibor Administration Area, Jonglei State, Like State and Southeast of Upper Nile State.



**Figure 2:** Outlook for 14-21 Jan 2025 Mean Temperature

## Weekly Rainfall and Temperature Outlook and Monitoring

### Heat Stress Index for 14<sup>th</sup> to 21<sup>st</sup> January 2025

According to the Heat Stress index below, we have three levels of heat wave (Caution, Extreme Caution and Danger)

The Legend is a light blue to blue colour representing Caution it indicates a moderate level of risk, which means there are potential risks ahead that you should be aware of or a warning to proceed with care and stay alert.

The second was Extreme Caution which implies a higher level of risk compared with the first one (Caution), It suggests that the situation is more dangerous or precarious and requires heightened awareness and vigilance.

The last indicated by red colour was Danger it is the most serious level of warning, indicating an imminent threat or hazard that poses a significant risk to safety or life. It signals that immediate action is necessary to avoid injury or harm.

