

Weekly Rainfall and Temperature Outlook and Monitoring

Highlights

Outlook for 16 to 23 April 2025

- Dry conditions are expected over most parts of the Southern country from the 16 to 23 April 2025
- **Forecast Mean Temperatures** of more than 32⁰C cover most parts of Northern South Sudan
- Most parts of South Sudan. Excessive **heat stress** can affect cattle and human health. on 19 to 23 April 2025.

Last week's weather review 07th April to 13th April 2025

- Dry conditions of less than 25 mm were most part of South Sudan last week 07 to 13 April 2025

Thus, it is recommended that the general population adopt the following safety measures:

- Public awareness campaigns should focus on staying hydrated, limiting outdoor activities during peak heat hours, and wearing light, breathable clothing.
- Encourage efficient water use and pre-position resources in areas forecasted for hotter and drier conditions
- Inspect your home. Remove leaves and debris from gutters, and clear your storm drains and drainage areas of any debris before the rain in Southern South Sudan areas.
- It's good to stay updated on meteorological services advisories, especially in regions expecting hotter and drier conditions
- Monitor weekly forecast updates from meteorological services

Notes

The South Sudan Meteorological Department's Weekly Rainfall and Temperature Outlook and Monitoring offers concise and timely weather predictions essential for immediate planning and operational decisions across vital sectors such as agriculture, transportation, and emergency services. This forecast provides a detailed outlook on temperature variations, rainfall probabilities, and any impending severe weather conditions, enabling stakeholders to mitigate risks, plan agricultural activities more effectively, and ensure the safety of transportation routes. The weekly forecast is critical in improving community readiness and economic stability by accelerating short-term decision-making processes.

Weekly Rainfall and Temperature Outlook and Monitoring

Rainfall Forecast for 16 to 23 April 2025

Heavy rainfall exceeding 100 mm, surpassing 10% of the record, is expected in the southeast of South Sudan (Kapoeta East in Eastern Equatoria State).

Moderate Rainfall (over 50 mm, exceeding the top 10% on record) is anticipated over the southern parts of Western Equatoria, the South of Central Equatoria, the South of Eastern Equatoria, and the East parts of the Bibor Administration Area.

Light rainfall (less than 50 mm) is expected across most areas of Northern South Sudan.

Total Rainfall (mm) for 16-23 Apr 2025

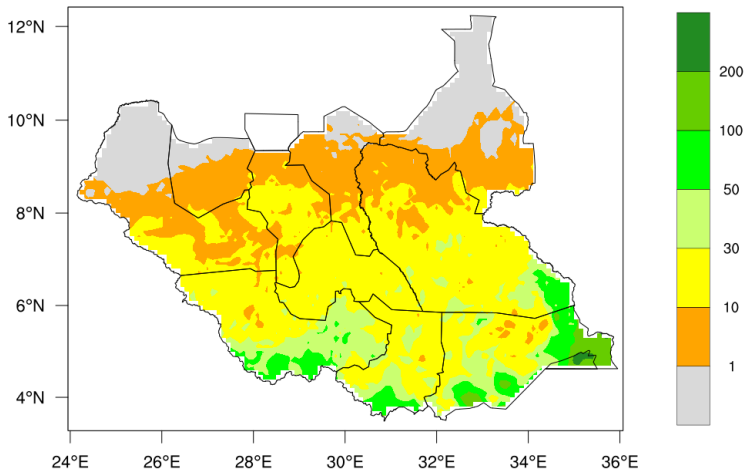
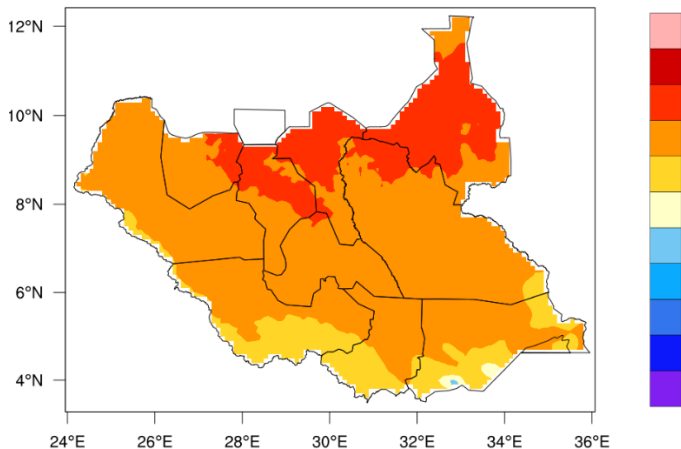


Figure 1a: Outlook for 16 to 23 April 2025 Total Rainfall

Mean Temperature (C) for 16-23 Apr 2025



Mean Temperature Outlook for 16 to 23 April 2025

From next week, April 16, to April 23, 2025, the average Temperature is expected to range between 24 °C and 32 °C over most parts of South Sudan. It will be more than 32°C over most parts of Upper Nile State, Northern Jonglei State, most parts of Unity State, Abyei Administration Area, Warrap State and eastern parts of Northern Bahar el Gazal State.

Figure 2: Outlook for 16 to 23 April 2025 Mean Temperature

Weekly Rainfall and Temperature Outlook and Monitoring

Monitoring last week's Satellite & Gauge Estimated Rainfall (mm) for 07th April to 13th April 2025

During the past week, there has been Light rainfall of less than 10mm in the Eastern Equatoria, Southern parts of Bibor Administration Area, Unity State, Abyei Administration Area, Warrap State, Northern Bahar el Gazal State, and Western Bahar el Gazal State, while Western Equatoria, most parts of Central Equatoria, Bibor Administration Area, Jonglei State, Upper Nile State, and South parts of Western Bahar el Gazal State have had rainfall of more than 10 mm.

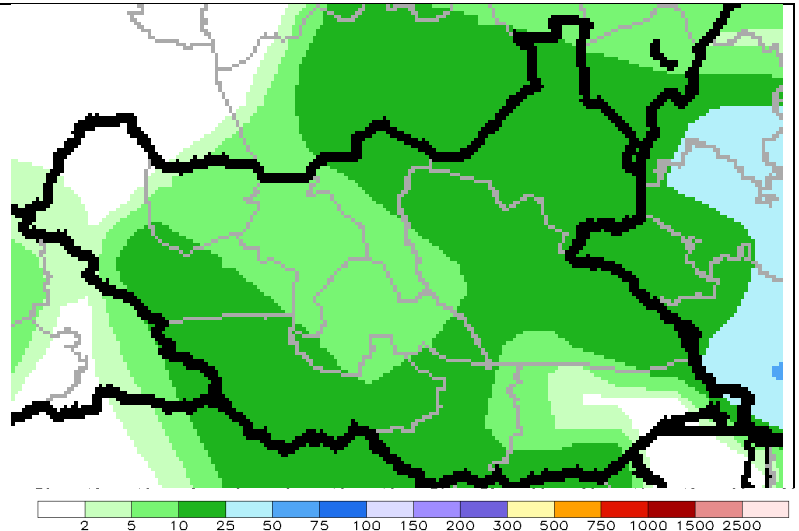


Figure 3a: past week Satellite& Gauge Estimated Rainfall(mm)
Source: NOAA/CPC

Heat Stress Index for 16 to 23 April 2025

According to the Heat Stress index below, we have three levels of heat wave (Caution, Extreme Caution and Danger)

The Legend is a light blue to blue colour representing Caution it indicates a moderate level of risk, which means there are potential risks ahead that you should be aware of or a warning to proceed with care and stay alert.

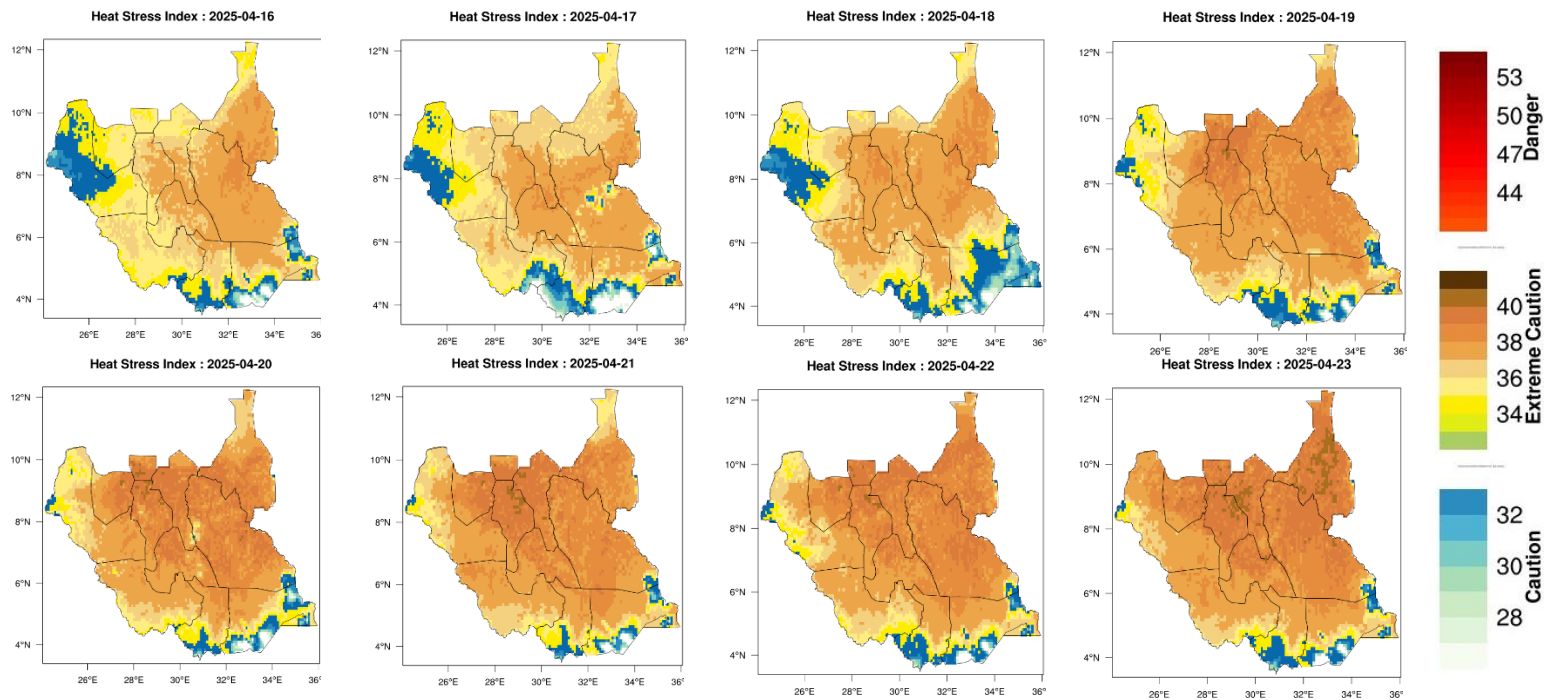
The second was Extreme Caution which implies a higher level of risk compared with the first one (Caution), It suggests that the situation is more dangerous or precarious and requires heightened awareness and vigilance.

The last indicated by red colour was Danger it is the most serious level of warning, indicating an imminent threat or hazard that poses a significant risk to safety or life. It signals that immediate action is necessary to avoid injury or harm.



South Sudan Meteorological Services

Weekly Rainfall and Temperature Outlook and Monitoring



For more information, please contact egurino@yahoo.com