

Weekly Rainfall and Temperature Outlook and Monitoring

Highlights

Outlook for 23 to 30 April 2025

- Dry conditions are expected over most parts of the South and Southeastern South Sudan country from 23 to 30 April 2025
- **Forecast Mean Temperatures** of more than 32°C cover North of El Renk and Raja.
- **Most parts of South Sudan. Excessive heat stress** can affect cattle and human health. on 23, 24, 25 and 26 April 2025.

Last week's weather review: 14th April to 20th April 2025

- Dry conditions of less than 25 mm were most of South Sudan last week, 14 to 20 April 2025

Thus, it is recommended that the general population adopt the following safety measures:

- Public awareness campaigns should focus on staying hydrated, limiting outdoor activities during peak heat hours, and wearing light, breathable clothing.
- Encourage efficient water use and pre-position resources in areas forecasted for hotter and drier conditions
- Inspect your home. Remove leaves and debris from gutters, and clear your storm drains and drainage areas of any debris before the rain in Southern South Sudan areas.
- It's good to stay updated on meteorological services advisories, especially in regions expecting hotter and drier conditions
- Monitor weekly forecast updates from meteorological services

Notes

The South Sudan Meteorological Department's Weekly Rainfall and Temperature Outlook and Monitoring offers concise and timely weather predictions essential for immediate planning and operational decisions across vital sectors such as agriculture, transportation, and emergency services. This forecast provides a detailed outlook on temperature variations, rainfall probabilities, and any impending severe weather conditions, enabling stakeholders to mitigate risks, plan agricultural activities more effectively, and ensure the safety of transportation routes. The weekly forecast is critical in improving community readiness and economic stability by accelerating short-term decision-making processes.

Weekly Rainfall and Temperature Outlook and Monitoring

Total Rainfall (mm) for 23-30 Apr 2025

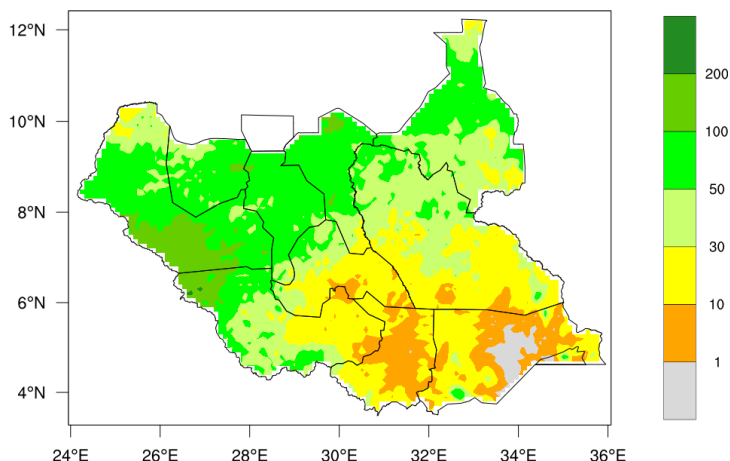


Figure 1a: Outlook for 23 to 30 April 2025 Total Rainfall

Rainfall Forecast for 23 to 30 April 2025

Heavy rainfall exceeding 100 mm, surpassing 10% of the record, is expected in the southern parts of Western Bahar el Gazal State, the northwestern parts of Western Equatoria State, and the northern parts of Unity State.

Moderate Rainfall (over 50 mm, exceeding the top 10% on record) is anticipated over the central parts of Upper Nile State, most parts of Unity State, Abyei Administration Area, Warrap State, most parts of Northern Bahar el Gazal State, parts of Western Equatoria State and most parts of Western Bahar el Gazal State.

Light rainfall (less than 50 mm) is expected across most areas of South, Southeast and Central South Sudan.

Mean Temperature (C) for 23-30 Apr 2025

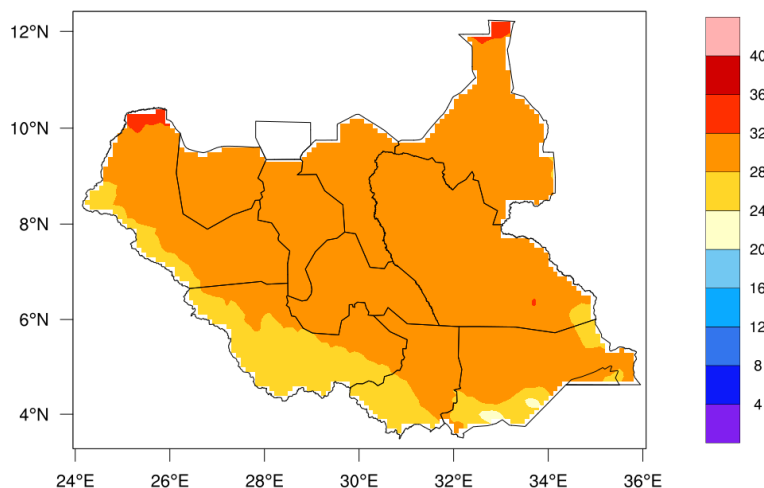


Figure 2: Outlook for 23 to 30 April 2025 Mean Temperature

Mean Temperature Outlook for 23 to 30 April 2025

From next week, April 23, to April 30, 2025, the average Temperature is expected to range between 24 °C and 32 °C over most parts of South Sudan. It will be more than 32°C over the Northern parts of Upper Nile State (El Renk) and the northern part of Western Bahar el Gazal State(Irea).

Weekly Rainfall and Temperature Outlook and Monitoring

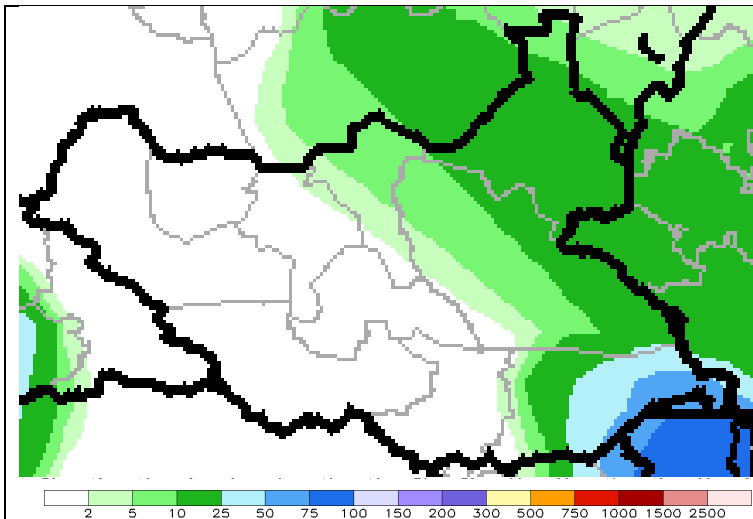


Figure 3a: past week Satellite& Gauge Estimated Rainfall(mm)

Source: NOAA/CPC

Monitoring last week's Satellite & Gauge Estimated Rainfall (mm) for 14th April to 20th April 2025

During the past week, there has been dry condition over Warrap State, Northern Bahar el Gazal State, Western Bahar el Gazal State, Western Equatoria State Central Equatoria State and Like State, while Eastern Equatoria State, Bibor Administration Area, Jonglei State, Upper Nile State, Unity State and Abyei Administration Area have had rainfall of more than 10 mm.

Heat Stress Index for 23 to 30 April 2025

According to the Heat Stress index below, we have three levels of heat wave (Caution, Extreme Caution and Danger)

The Legend is a light blue to blue colour representing Caution it indicates a moderate level of risk, which means there are potential risks ahead that you should be aware of or a warning to proceed with care and stay alert.

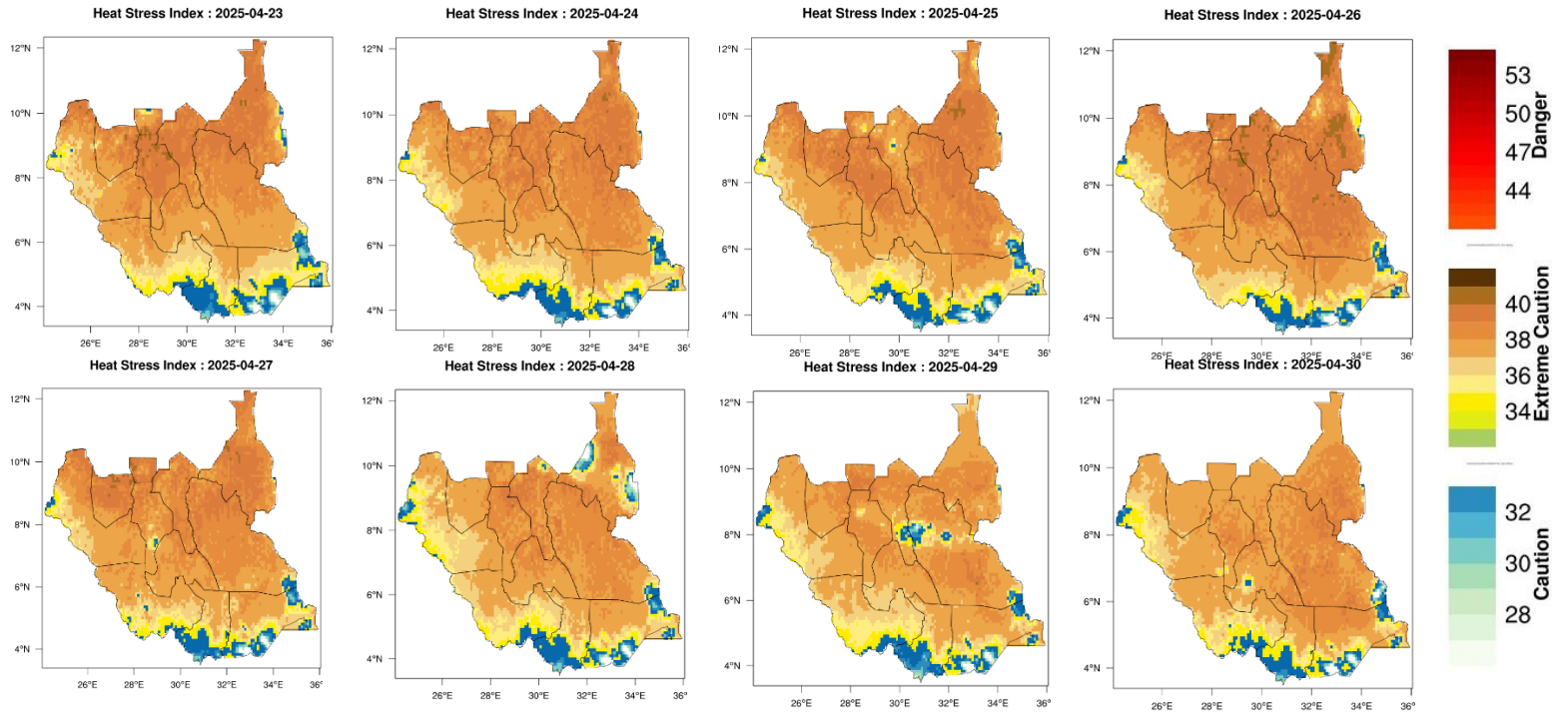
The second was Extreme Caution which implies a higher level of risk compared with the first one (Caution), It suggests that the situation is more dangerous or precarious and requires heightened awareness and vigilance.

The last indicated by red colour was Danger it is the most serious level of warning, indicating an imminent threat or hazard that poses a significant risk to safety or life. It signals that immediate action is necessary to avoid injury or harm.



South Sudan Meteorological Services

Weekly Rainfall and Temperature Outlook and Monitoring



For more information, please contact equirino@yahoo.com