

Weekly Rainfall and Temperature Outlook and Monitoring

Highlights

Outlook for 23 to 30 July 2025

- Wet conditions are expected over most parts of South Sudan from 23 to 30 July 2025.
- **Heavy rainfall is expected over most states in center and South of the country.**
- **Forecast Mean Temperatures** are expected to be below 24⁰C across most parts of South Sudan.

Last week's weather review: 14 to 20 July 2025

- Wet conditions of more than 25 mm were in most of Jonglei, Upper Nile, and Western Bahar el Gazal State 14 to 20 July 2025.

Thus, it is recommended that the general population adopt the following safety measures:

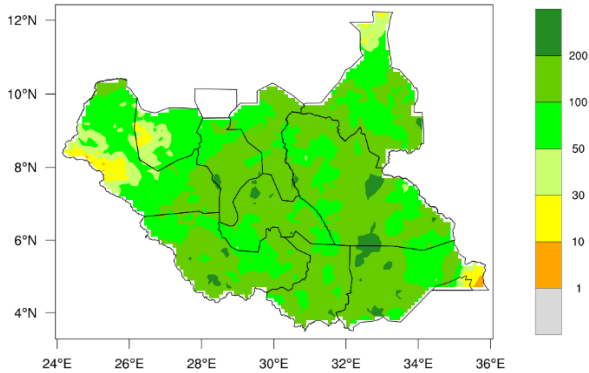
- Central, southeastern and southwestern South Sudan experienced unusually intense rainfall during the week, with several areas under **very heavy to extremely heavy rainfall** categories.
- These exceptional events align with the **high totals shown in the total rainfall map**, reinforcing the likelihood of **flooding, rising river levels, or impacts on roads and farmlands.**
- Inspect your home. Remove leaves and debris from gutters, and clear your storm drains and drainage areas of any debris before the rain in most parts of South Sudan.
- It's good to stay updated on meteorological services advisories, especially in regions expecting hotter and drier conditions
- Monitor weekly forecast updates from meteorological services

Notes

The South Sudan Meteorological Department's Weekly Rainfall and Temperature Outlook and Monitoring offers concise and timely weather predictions essential for immediate planning and operational decisions across vital sectors such as agriculture, transportation, and emergency services. This forecast provides a detailed outlook on temperature variations, rainfall probabilities, and any impending severe weather conditions, enabling stakeholders to mitigate risks, plan agricultural activities more effectively, and ensure the safety of transportation routes. The weekly forecast is critical in improving community readiness and economic stability by accelerating short-term decision-making processes.

Weekly Rainfall and Temperature Outlook and Monitoring

Total Rainfall (mm) for 23-30 Jul 2025



Rainfall Forecast for 23 to 30 July 2025

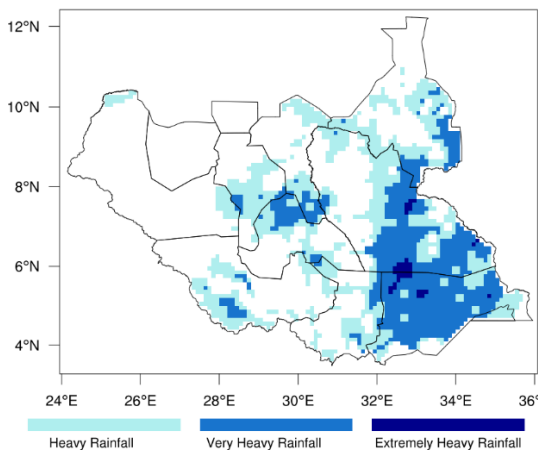
Heavy rainfall exceeding 200 mm, which is in the top 20% of records, is anticipated over southeastern, central, and southwestern South Sudan, especially in parts of Western Equatoria, Eastern Equatoria, the Southern Part of the Bibor Administration area, central Jonglei, Lake State, and the Southern Part of Warrap State.

Moderate Rainfall (30 -100 mm, exceeding the top 10% on record) is anticipated over most States of South Sudan.

Light rainfall (less than 30 mm) is anticipated over the Eastern parts of Eastern Equatoria State, the North parts of Upper Nile, the Western parts of Northern Bahar el Gazal State and the centre of Western Bahar el Gazal State.

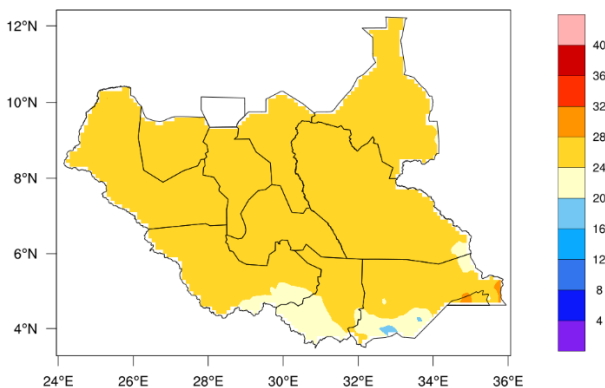
Figure 1a: Outlook for 23 to 30 July 2025 Total Rainfall

Exceptional Rainfall for 23-30 Jul 2025



Exceptional Rainfall for 23 to 30 Jul 2025

Mean Temperature (C) for 23-30 Jul 2025



Mean Temperature Outlook for 23 to 30 July 2025

From July 23 to July 30, 2025, the average Temperature is expected to range between 20°C and 24°C over most parts of South Sudan. At the same time, Eastern Equatoria's southern parts are expected to have less than 20°C.

Figure 2: Outlook for 23 to 30 July 2025 Mean Temperature

Weekly Rainfall and Temperature Outlook and Monitoring

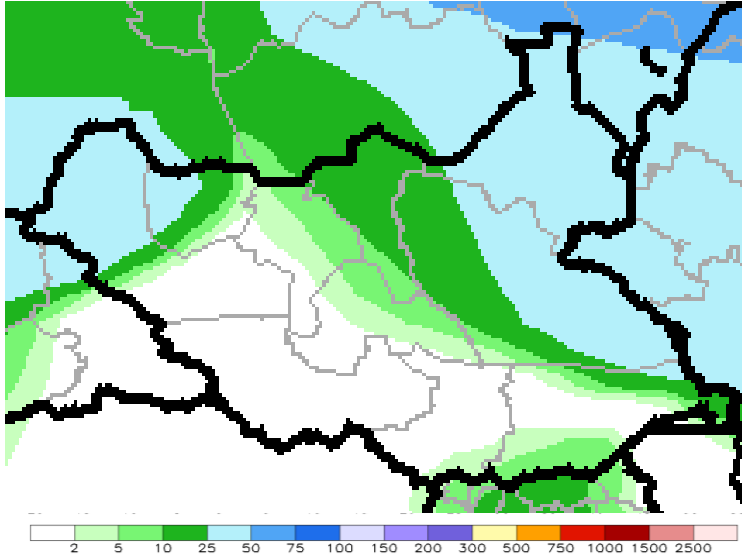


Figure 3a: past week Satellite& Gauge Estimated Rainfall(mm)

Source: NOAA/CPC

Monitoring last week's Satellite & Gauge Estimated Rainfall (mm) for 14 to 20 July 2025

During the past week, most parts of South Sudan have experienced dry conditions, whereas the eastern parts of Bibor Administration Area, Jonglei, Upper Nile State, western parts of Northern Bahar el Gazal State, and Northern parts of Western Bahar el Gazal State have received rainfall of more than 25 mm.

Heat Stress Index for 23 to 30 July 2025

According to the Heat Stress index below, we have three levels of heat wave (Caution, Extreme Caution and Danger)

The Legend is a light blue to blue colour representing Caution, it indicates a moderate level of risk, which means there are potential risks ahead that you should be aware of or a warning to proceed with care and stay alert.

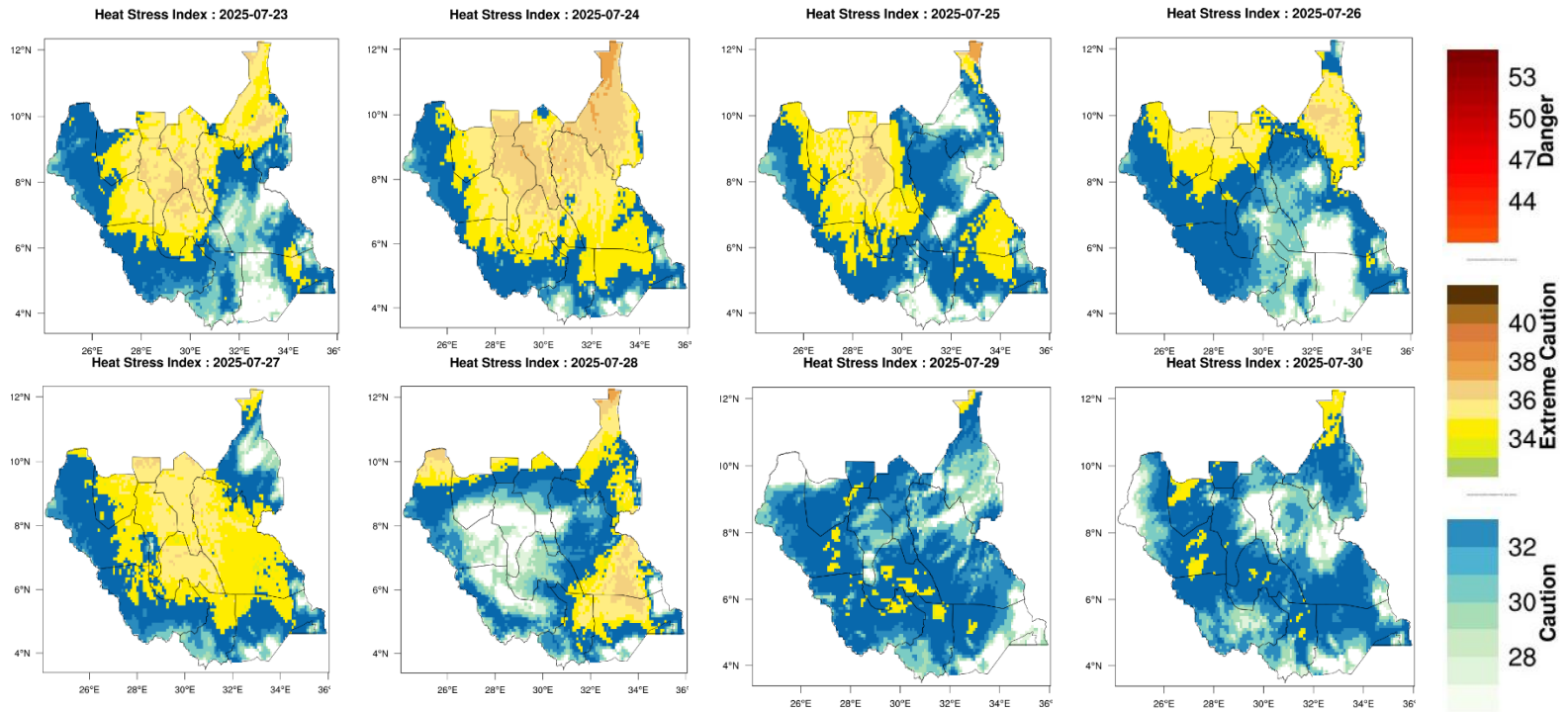
The second was Extreme Caution, which implies a higher level of risk than the first one (Caution). It suggests that the situation is more dangerous or precarious and requires heightened awareness and vigilance.

The last indicated by red colour was Danger, it is the most serious level of warning, indicating an imminent threat or hazard that poses a significant risk to safety or life. It signals that immediate action is necessary to avoid injury or harm.



South Sudan Meteorological Services

Weekly Rainfall and Temperature Outlook and Monitoring



For more information, please contact Emmanuel Qurino: equirino@yahoo.com