



South Sudan Meteorological Services

Weekly Rainfall and Temperature Outlook and Monitoring

Highlights

Outlook for 08th to 15th October 2024 <ul style="list-style-type: none">• Wetter conditions are expected over most parts of the country from the 08th to the 15th of October 2024• Heavy Rainfall is Expected over most of the South of Western Bahr el Ghazal State and the Southern parts of the Western Equatoria State.• Forecast Mean Temperatures of less than 28⁰C cover most parts of South Sudan except Kapoeta, Bibor Administration Area, and El Renk.	Last week's weather review for 28th September to 04th October 2024 <ul style="list-style-type: none">• Wetter more than 50 mm conditions were in Eastern parts of the Bibor Administration Area, and Jonglei State. while Light rainfall of less than 50 mm was in most parts of South Sudan last week from the 28th of September to 04th of October 2024.
--	---

Thus, it is recommended that the general population adopt the following safety measures:

- Inspect your home. Remove leaves and debris from gutters, and clear your storm drains and drainage areas of any debris before the rain.
- Rainy season items that you must take (Rain Coat & Rain Suit and Umbrella)
- If there's a risk of severe flooding in your area, move your valuable belongings to the upper floors
- It's a good idea to stay updated on meteorological services advisories, especially in regions expecting heavy rainfall.
- Monitor weekly forecast updates from meteorological services

Notes

The South Sudan Meteorological Department's Weekly Rainfall and Temperature Outlook and Monitoring offers concise and timely weather predictions essential for immediate planning and operational decisions across vital sectors such as agriculture, transportation, and emergency services. This forecast provides a detailed outlook on temperature variations, rainfall probabilities, and any impending severe weather conditions, enabling stakeholders to mitigate risks, plan agricultural activities more effectively, and ensure the safety of transportation routes. The weekly forecast is critical in improving community readiness and economic stability by accelerating short-term decision-making processes.



South Sudan Meteorological Services

Weekly Rainfall and Temperature Outlook and Monitoring

Rainfall Forecast for 08th to 15th October 2024

Heavy Rainfall (≥ 100 mm, exceeding 10% on record): Expected over most of the South of Western Bahr el Ghazal State and the South part of the Western Equatoria.

Moderate Rainfall (over 50 mm, exceeding the top 10% on record): Anticipated over most parts of South Sudan.

Light Rainfall (less than 30 mm): Forecasted for most parts of Central Equatoria, Eastern Equatoria, the Bibor Administration Area, Jonglei State, Like State, and most parts of the Upper Nile State, Unity State, Abyei Administration Area, Warrap State and Northern Bahr el Ghazal State.

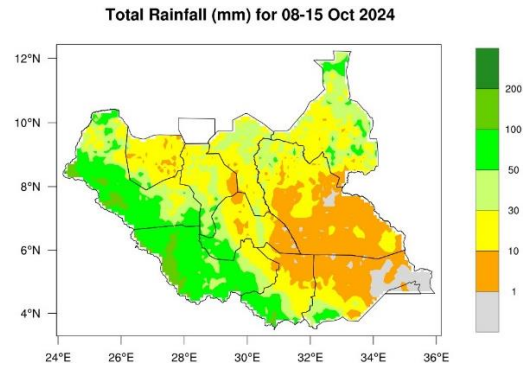


Figure 1a: Outlook for 08 to 15 October 2024 Total Rainfall

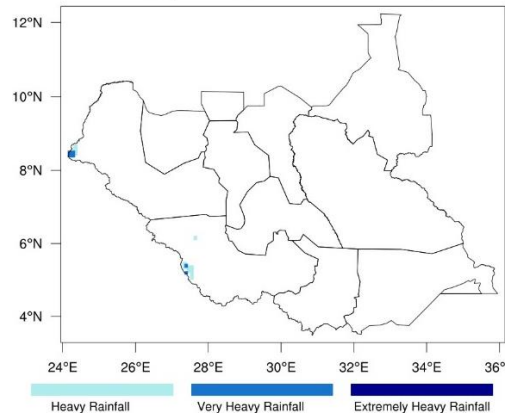


Figure 1b: Outlook for 08-15 Oct. 2024 Exceptional Rainfall

Mean Temperature Outlook for 08th to 15th October 2024

From next week, October 08th to 15th October 2024, the average Temperature is expected to range between 24^oC and 28^oC in many parts of South Sudan. More than 28^oC over Kapoeta East is in the Eastern Equatoria State, South parts of Bibor Administration Area and the North parts of Upper Nile State (El Renk).

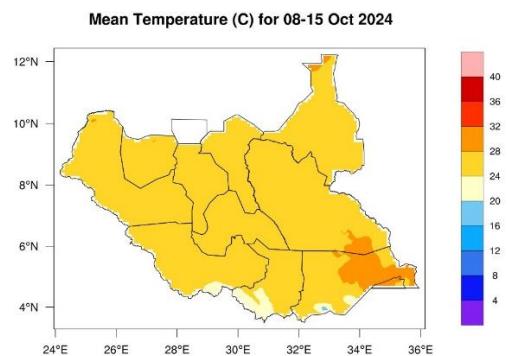


Figure 2: Outlook for 08-15 Oct. 2024 Mean Temperature



South Sudan Meteorological Services

Weekly Rainfall and Temperature Outlook and Monitoring

Monitoring last week's Satellite & Gauge Estimated Rainfall (mm) for 28th September to 04th October 2024

During the past week, the light rainfall was less than 50 mm in most parts of South Sudan, while in the eastern parts of Bibor Administration Area, and Jonglei State, the rainfall was more than 50 mm.

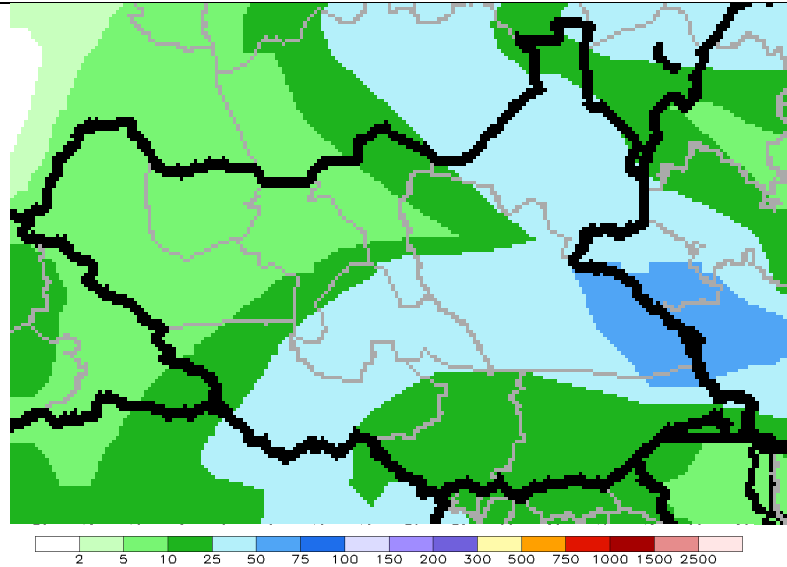


Figure 3a: past week Satellite & Gauge Estimated Rainfall (mm)
Source: NOAA/CPC

Heat Stress Index for 08th to 15th October 2024

According to the Heat Stress index below, we have three levels of heat wave (Caution, Extreme Caution and Danger)

The Legend is a light blue to blue colour representing Caution it indicates a moderate level of risk, which means there are potential risks ahead that you should be aware of or a warning to proceed with care and stay alert.

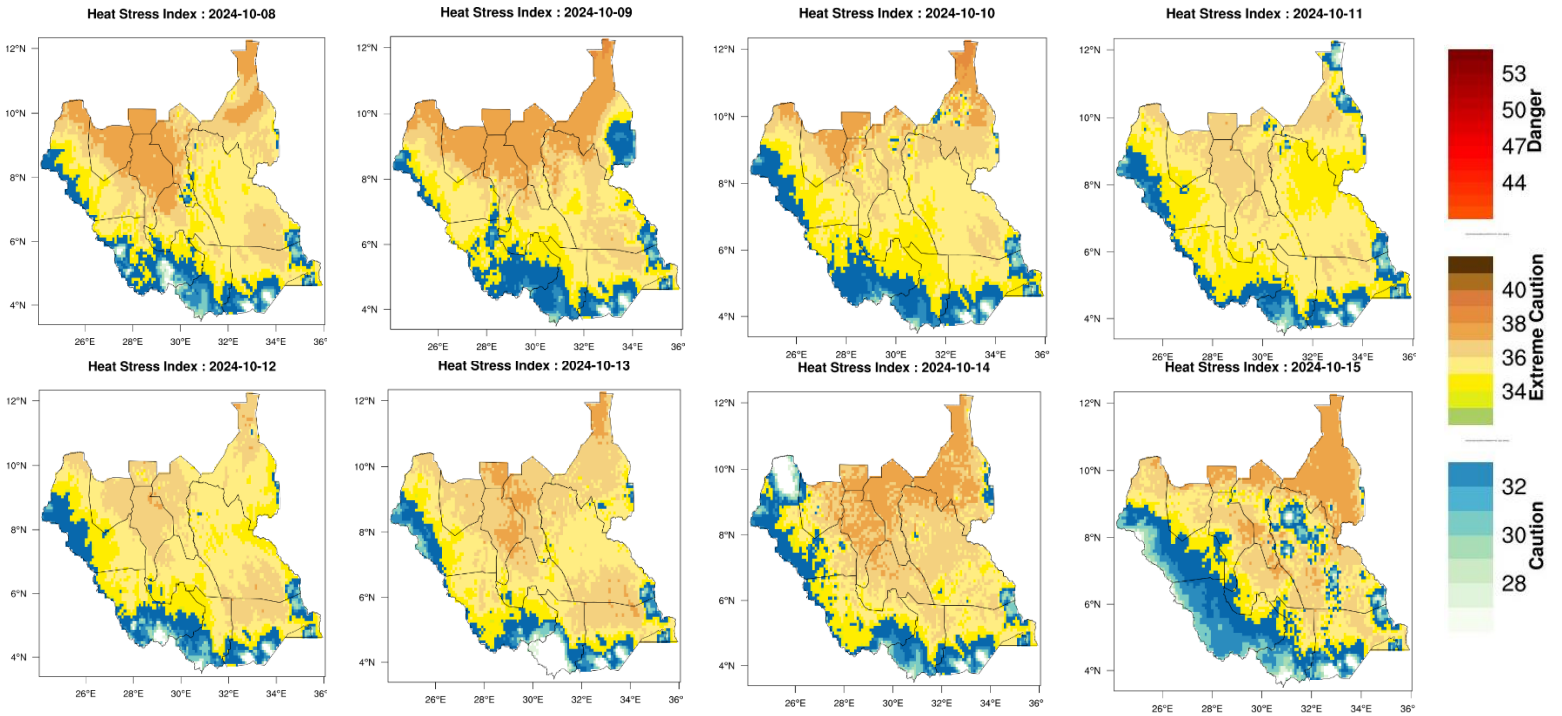
The second was Extreme Caution which implies a higher level of risk compared with the first one (Caution), It suggests that the situation is more dangerous or precarious and requires heightened awareness and vigilance.

The last indicated by red colour was Danger it is the most serious level of warning, indicating an imminent threat or hazard that poses a significant risk to safety or life. It signals that immediate action is necessary to avoid injury or harm.



South Sudan Meteorological Services

Weekly Rainfall and Temperature Outlook and Monitoring



For more information, please contact equirino@yahoo.com